

Explore the Awards

Click here to begin »»

Delivered in
partnership with:

The HayGroup logo, featuring the text 'HayGroup' in a blue, serif font with a registered trademark symbol (®) to the upper right, all contained within a white rectangular box. A large, light-colored curved graphic element is visible in the background behind the logo.

Contents



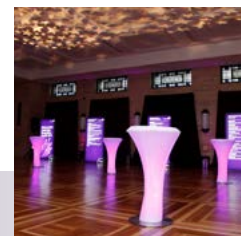
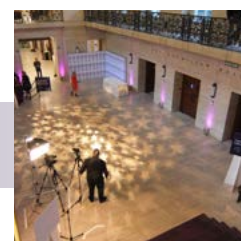
Opening speeches

- »»» Jan Sobieraj, Managing Director, NHS Leadership Academy
- »»» Simon Stevens, Chief Executive, NHS and Chair, NHS Leadership Academy Strategic Advisory Group
- »»» Ade Adepitan MBE



Nominees and winners

- »»» NHS Board / Governing Body of the Year
- »»» NHS Development Champion of the Year
- »»» NHS Emerging Leader of the Year
- »»» NHS Patient Champion of the Year
- »»» NHS Mentor / Coach of the Year
- »»» NHS Inspirational Leader of the Year
- »»» NHS Leader of Inclusivity of the Year
- »»» NHS Innovator of the Year
- »»» Outstanding Collaborative Leadership



Closing remarks

- »»» Jan Sobieraj, Managing Director, NHS Leadership Academy

How to order pictures





Why these awards matter

HG Hay Group in the UK
@Hay_Group_UK

We are proud to be sponsoring the NHS leadership academy awards, celebrating leadership & being reminded of the impact on patients #NHS Awards

7:36 PM - 31 Mar 2015

↩️ 2 ⭐️ 2

Follow



NHSLeadershipAcademy
@NHSLeadership

Simon Stevens is now addressing our guests #NHS Awards
"Tonight is about pride, recognising challenges and ambition"

7:27 PM - 31 Mar 2015

↩️ 29 ⭐️ 19

Follow

NHSLeadershipAcademy
@NHSLeadership

"I was and am, continually grateful to the NHS, which, in itself, is a great leader. You should all be proud." @AdeAdeptan

9:49 PM - 31 Mar 2015

↩️ 16 ⭐️ 5

Follow

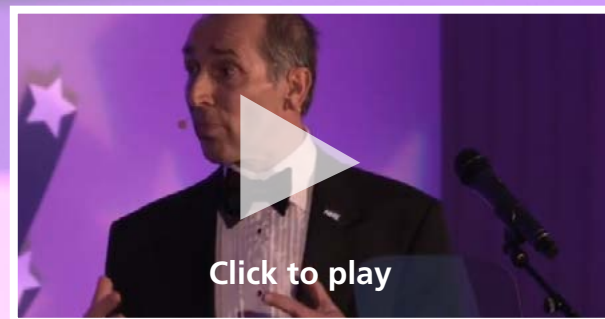


A flavour of the evening
Click to play



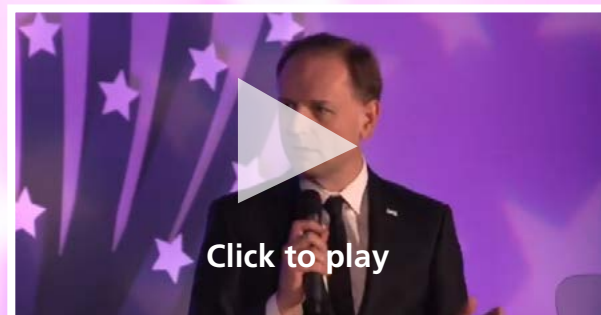
Jan Sobieraj

Managing Director, NHS Leadership Academy



Simon Stevens

Chief Executive, NHS and Chair, NHS Leadership Academy Strategic Advisory Group

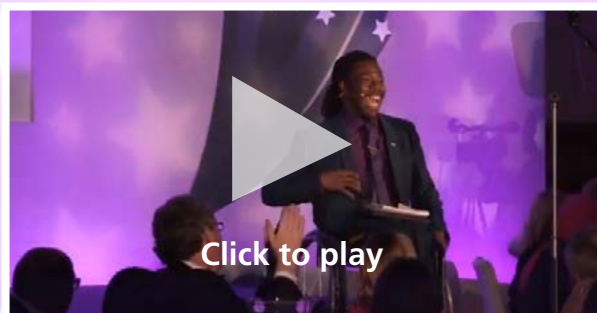


Host and keynote speaker

Ade Adepitan MBE



National NHS Leadership Recognition Awards 2015



 **Lisa Anderton**
@lilyand67 [Follow](#)

The brilliant @AdeAdepitan kicks off #NHS Awards - patient stories with a difference! @NHSLeadership

9:40 PM - 31 Mar 2015

👍 1 ⭐ 2

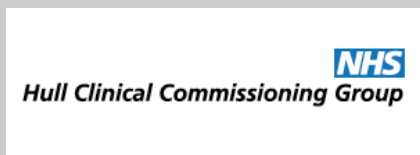
The background features a dark purple gradient with a series of lighter purple, semi-transparent rays emanating from the bottom left towards the top right. Scattered across these rays are several light-colored, five-pointed stars, some appearing to be on the rays and others floating in the space.

NHS Board / Governing Body of the Year



NHS Board / Governing Body of the Year

The Nominees



Emma Latimer

Chief Officer

NHS Hull Clinical Commissioning Group
Yorkshire and Humberside



**NHS Oldham Clinical Commissioning
Group Governing Board**

North West



**NHS East and North Hertfordshire
Clinical Commissioning Group
Governing Board**

East of England



**Birmingham Community
Healthcare NHS Trust
Trust Board**

West Midlands



**Northumbria Healthcare
NHS Foundation Trust
Trust Board**

North East



**NHS South Devon and Torbay
Clinical Commissioning Group
Governing Board**

South West



NHS Board / Governing Body of the Year

The Nominees



Nottinghamshire Local Education and Training Council (LETC) at Nottinghamshire Health and Social Care Community Trust Board
East Midlands



Sangeeta Saran
Head of Operations
Thames Valley and Wessex



Western Sussex Hospitals NHS Foundation Trust Board
Kent, Surrey and Sussex

“Difficult to judge and they were fantastic entries”

Phil Kenmore, Hay Group

NHS Board / Governing Body of the Year

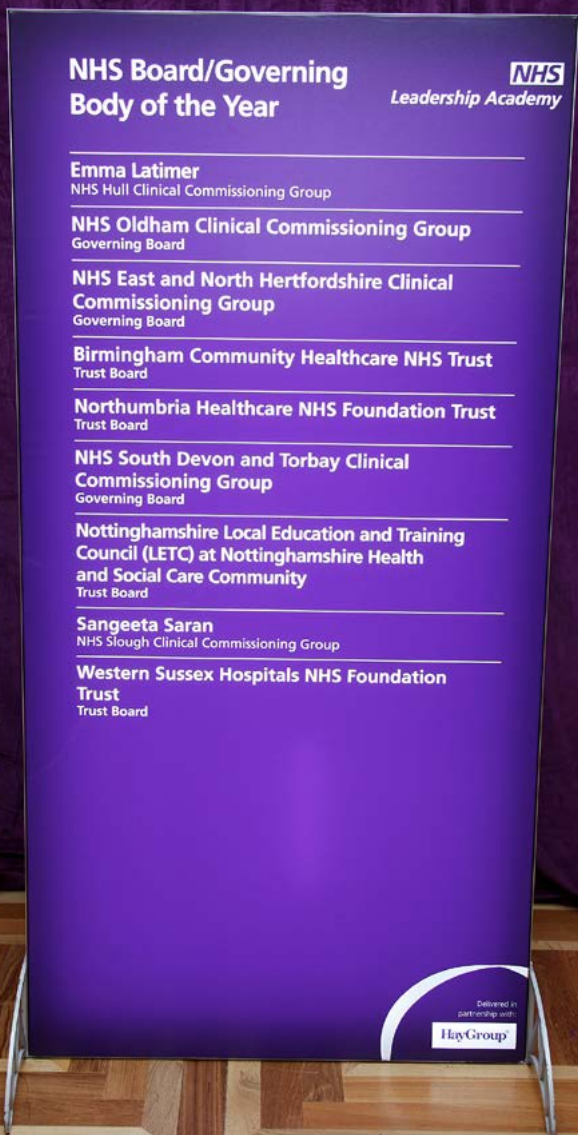
And the winner is...



From left:
Oldham CCG,
Ade Adepitan
MBE, host, and
Phil Kenmore,
Hay Group

NHS Oldham Clinical Commissioning Group

National NHS Leadership Recognition Awards 2015



The background features a dark purple gradient with a pattern of light purple, three-dimensional-looking bars radiating from the bottom left towards the top right. Each bar is topped with a light grey, five-pointed star. The text is centered in the middle of the image.

NHS Development Champion of the Year



NHS Development Champion of the Year

The Nominees



Melanie Liley
Head of AHP Services and Psychological Medicine
York Teaching Hospital NHS Foundation Trust
Yorkshire and Humberside



Caroline Williams
Clinical Lead and Consultant Psychotherapist
South West Yorkshire Partnership NHS Foundation Trust
Yorkshire and Humberside



Judy Walker
Organisational Development Manager
University College London Hospitals NHS Foundation Trust
London



Bob Williams
Chief Executive Officer
North West Ambulance Service
North West



Jacky Syme
UNICEF Baby Friendly Coordinator Practice Development Lead, 0-19 Service
South Essex Partnership Trust
East of England



Tarun Sharma
Clinical Director Ophthalmology
Worcestershire Acute Hospitals NHS Trust
West Midlands



NHS Development Champion of the Year

The Nominees



Daniel Evans
Project Facilitator
North Tees and Hartlepool
NHS Foundation Trust
North East



Joe Teape
**Finance Director and Deputy
Chief Executive Officer**
Plymouth Hospitals NHS Trust
South West



Dan Boden
**Consultant in Emergency
Medicine**
Derby Hospitals NHS
Foundation Trust
East Midlands



Dawn Roberts
**Operations Director –
Substance Misuse Services**
Solent NHS Trust
Thames Valley and Wessex



Wendy Mahoney
Head of Planned Care
Coastal West Sussex Clinical
Commissioning Group
Kent, Surrey and Sussex

***“Nominees looked
beyond current
problems and how
things could be
with engagement
through empathy
and leadership”***
Wendy Irwin, Royal
College of Nursing



NHS Development Champion of the Year

And the winner is...



From left: Joe Teape, Ade Adepitan MBE, host, and Wendy Irwin, Royal College of Nursing

Joe Teape

Finance Director and Deputy Chief Executive Officer, Plymouth Hospitals NHS Trust



National NHS Leadership Recognition Awards 2015

**NHS Development
Champion of the Year** 

Melanie Liley
Head of AHP Services and Psychological Medicine
York Teaching Hospital NHS Foundation Trust

Caroline Williams
Clinical Lead and Consultant Psychotherapist
South West Yorkshire Partnership NHS Foundation Trust

Judy Walker
Organisational Development Manager
University College London Hospitals NHS Foundation Trust

Bob Williams
Chief Executive Officer
North West Ambulance Service

Jacky Syme
UNICEF Baby Friendly Coordinator, Practice Development Lead 0-19 Service
South Essex Partnership Trust

Tarun Sharma
Clinical Director Ophthalmology
Worcestershire Acute Hospitals NHS Trust

Daniel Evans
Project Facilitator
North Tees and Hartlepool NHS Foundation Trust

Joe Teape
Finance Director and Deputy Chief Executive Officer
Plymouth Hospitals NHS Trust

Dan Boden
Consultant in Emergency Medicine
Derby Hospitals NHS Foundation Trust

Dawn Roberts
Operations Director - Substance Misuse Services
Solent NHS Trust

Wendy Mahoney
Head of Planned Care
Coastal West Sussex Clinical Commissioning Group

Delivered in partnership with




The background features a dark purple gradient with a pattern of light purple, five-pointed stars. Each star is positioned at the tip of a dark purple, three-dimensional ribbon that appears to be fanning out from the bottom left towards the top right. The text is centered over this graphic.

NHS Emerging Leader of the Year



NHS Emerging Leader of the Year

The Nominees



Shirley Moses
Project Manager
Hambleton, Richmondshire
and Whitby Clinical
Commissioning Group
Yorkshire and Humberside



Durka Dougall
Specialist Registrar
Tower Hamlets Public Health
London



Charlotte Hazelton
Project Manager – Patient and Staff Experience
University College London
Hospitals NHS Foundation Trust
London



Jayne Pattison
**TCT Youth Support
Coordinator**
The Clatterbridge Cancer
Centre
North West



Pat Phen
Consultant Cardiologist
Basildon and Thurrock
University Hospitals NHS
Foundation Trust
East of England



Shelley Price
Interim Matron
Royal Orthopaedic NHS
Foundation Trust
West Midlands



NHS Emerging Leader of the Year

The Nominees



Paul Watson
SCPHN Postgraduate Student
County Durham and Darlington NHS Foundation Trust
North East



Alison Wootton
Associate Director of Nursing - Medical Services
Royal Devon and Exeter NHS Foundation Trust
South West



Catherine Harrison
Deputy Sister
Nottingham University Hospitals NHS Trust
East Midlands

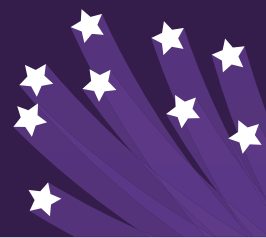


Billi-Anne Harris
Domestic Supervisor
Hampshire Hospitals NHS Foundation Trust
Thames Valley and Wessex



Radcliffe Lisk
Consultant Geriatrician and Speciality Lead
Ashford and St Peter's NHS Foundation Trust
Kent, Surrey and Sussex

“Thinking outside the box ...not afraid to challenge in the pursuit of excellent patient care”
Clare Price-Dowd,
NHS Leadership Academy



NHS Emerging Leader of the Year

And the winner is...



From left: Billi-Anne Harris, Ade Adepitan MBE, host, and Clare Price-Dowd, NHS Leadership Academy

Billi-Anne Harris

Domestic Supervisor, Hampshire Hospitals NHS Foundation Trust



National NHS Leadership Recognition Awards 2015

NHS Emerging Leader of the Year 

Shirley Moses
Project Manager
Hambleton, Richmondshire and Whitby Clinical Commissioning Group

Durka Dougall
Specialist Registrar
Tower Hamlets Public Health

Charlotte Hazelton
Project Manager - Patient and Staff Experience
University College London Hospitals NHS Foundation Trust

Jayne Pattison
TCT Youth Support Coordinator
The Clatterbridge Cancer Centre

Pat Phen
Consultant Cardiologist
Basildon and Thurrock University Hospitals NHS Foundation Trust

Shelley Price
Interim Matron
Royal Orthopaedic NHS Foundation Trust

Paul Watson
SCP HN Postgraduate Student
County Durham and Darlington NHS Foundation Trust

Alison Wootton
Associate Director of Nursing - Medical Services
Royal Devon and Exeter NHS Foundation Trust

Catherine Harrison
Deputy Sister
Nottingham University Hospitals NHS Trust

Billi-Anne Harris
Domestic Supervisor
Hampshire Hospitals NHS Foundation Trust

Radcliffe Lisk
Consultant Geriatrician and Speciality Lead
Ashford and St Peter's NHS Foundation Trust

Delivered in partnership with




The background of the page is a dark purple color. It features a central graphic consisting of several light purple, five-pointed stars arranged in a semi-circular pattern. Each star is positioned at the end of a dark purple, three-dimensional-looking beam that radiates outwards from the center, creating a sense of depth and movement.

NHS Patient Champion of the Year



NHS Patient Champion of the Year

The Nominees



Safia Jabeen
**Associate Specialist
Doctor**

Mid Yorkshire NHS Trust
Yorkshire and Humberside



Andrea Clarke
**Highly Specialist Paediatric
Physiotherapist – Transitions**

North West London Hospitals
NHS Trust
London



Glenis Tansey
**Engagement and Patient
Experience Lead**

Chorley and South Ribble Clinical
Commissioning Group and
NHS Greater Preston Clinical
Commissioning Group



The Ipswich Heart Centre
**Delivering PCI services to
cardiology patients**

Ipswich Hospital NHS Trust
East of England



Experts by Experience Team

Dudley and Walsall Mental
Health
Partnership NHS Trust
West Midlands



Claire Campbell
Nursing Sister at NICU

Royal Victoria Infirmary
North East



NHS Patient Champion of the Year

The Nominees



Lynda Hughes
Manager – Forget Me Not
Centre
Wiltshire Partnership NHS
Trust
South West



Paul Brooks
Associate Director of Patient
Experience and
Head of Facilities
Management
Derby Hospitals NHS
Foundation Trust
East Midlands



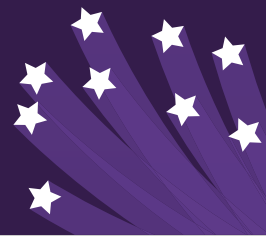
Pamela Ellis
Orthodontic Consultant
Dorset County Hospital NHS
Foundation Trust
West Midlands



Jemma Lynam
Nursing Sister at NICU
Occupational Therapist
Surrey and Borders Partnership
NHS Foundation Trust
North East

***“Valuing patients as our equals, while
at the same time treating them to the
best of our ability”***

Mala Rao, Institute of Health & Human
Development at University of East London



NHS Patient Champion of the Year

And the winner is...



From left:
Rachel Clark
(representing
Lynda Hughes),
Ade Adepitan
MBE, host,
and Mala Rao,
Institute of
Health & Human
Development
at University of
East London

Lynda Hughes

Manager - Forget Me Not Centre, Wiltshire Partnership NHS Trust



National NHS Leadership Recognition Awards 2015

NHS Patient Champion of the Year

NHS
Leadership Academy

Safia Jabeen

Associate Specialist Doctor
Mid Yorkshire NHS Trust

Andrea Clarke

Highly Specialist Paediatric Physiotherapist – Transitions
North West London Hospitals NHS Trust

Glenis Tansey

Engagement and Patient Experience Lead
Chorley and South Ribble Clinical Commissioning Group/
NHS Greater Preston Clinical Commissioning Group

The Ipswich Heart Centre

Ipswich Hospital NHS Trust

Experts by Experience team

Dudley and Walsall Mental Health Partnership NHS Trust

Claire Campbell

Nursing Sister at NICU
Royal Victoria Infirmary

Lynda Hughes

Manager - Forget Me Not Centre
Wiltshire Partnership NHS Trust

Paul Brooks

Associate Director of Patient Experience and Head of Facilities
Management
Derby Hospitals NHS Foundation Trust

Pamela Ellis

Orthodontic Consultant
Dorset County Hospital NHS Foundation Trust

Jemma Lynam

Occupational Therapist
Surrey and Borders Partnership NHS Foundation Trust

Delivered in
partnership with:
HayGroup



The background features a dark purple gradient with a series of lighter purple, three-dimensional-looking rays emanating from the bottom left towards the top right. Each ray is topped with a light-colored, five-pointed star. The overall effect is one of upward-pointing energy and achievement.

NHS Mentor / Coach of the Year



NHS Mentor / Coach of the Year

The Nominees



Steve Harrison
**Faculty Lead and
Improvement Manager**
Sheffield Microsystem
Coaching Academy and
Sheffield Teaching Hospitals
NHS Foundation Trust
Yorkshire and Humberside



Stella Vig
**Core Surgery Programme
Director**
Croydon University Hospital
London



Simon Barber
Chief Executive Officer
5 Boroughs Partnership NHS
Foundation Trust
North West



Chris Birbeck
**Head of Quality and
Improvement**
Health Education
East of England
East of England



Desmond Conlon
**Deputy Lead Practitioner
in Theatres**
Sandwell and West Birmingham
Hospitals NHS Trust
West Midlands



Mary Darroch
**Organisational and Staff
Development Manager**
Gateshead Health NHS
Foundation Trust
North East



NHS Mentor / Coach of the Year

The Nominees



Michelle Jennings
Staff Development Lead
Hope Directorate Taunton
and Somerset NHS
Foundation Trust
South West



Adrian Piggott
**Leadership Development
Advisor**
Derby Hospitals NHS
Foundation Trust
East Midlands



Lesley Pimley
Deputy Sister
Hampshire Hospitals NHS
Foundation Trust
Thames Valley and Wessex



Gerraint Davies
**Director of Commercial
Services**
South East Coast Ambulance
Service NHS Foundation Trust
Kent, Surrey and Sussex

“Immensely rewarding... wonderful benefits for recipient including fresh perspectives on personal challenges, enhanced decision making skills, greater interpersonal effectiveness, increased confidence”

*Zoeta Manning,
Management in Partnership*



NHS Mentor / Coach of the Year

And the winner is...



From left:
Steve Harrison,
Ade Adepitan
MBE, host and
Zoeta Manning,
Management in
Partnership

Steve Harrison

Faculty Lead and Improvement Manager, Sheffield Microsystem Coaching Academy
and Sheffield Teaching Hospitals NHS Foundation Trust



National NHS Leadership Recognition Awards 2015

NHS Mentor/Coach of the Year



Steve Harrison

Faculty Lead and Improvement Manager
Sheffield Microsystem Coaching Academy and Sheffield Teaching Hospitals NHS Foundation Trust

Stella Vig

Core Surgery Programme Director
Croydon University Hospital

Simon Barber

Chief Executive Officer
5 Boroughs Partnership NHS Foundation Trust

Chris Birbeck

Head of Quality and Improvement
Health Education East of England

Desmond Conlon

Deputy Lead Practitioner in Theatres
Sandwell and West Birmingham Hospitals NHS Trust

Mary Darroch

Organisational and Staff Development Manager
Gateshead Health NHS Foundation Trust

Michelle Jennings

Staff Development Lead – Hope Directorate
Taunton and Somerset NHS Foundation Trust

Adrian Piggott

Leadership Development Advisor
Derby Hospitals NHS Foundation Trust

Lesley Pimley

Deputy Sister
Hampshire Hospitals NHS Foundation Trust

Gerraint Davies

Director of Commercial Services
South East Coast Ambulance Service NHS Foundation Trust

Delivered in partnership with:



The background features a dark purple gradient with a pattern of light purple, 3D-style ribbons or beams radiating from the bottom left towards the top right. Each ribbon is topped with a light grey, five-pointed star. The text is centered in the middle of the image.

NHS Inspirational Leader of the Year



NHS Inspirational Leader of the Year

The Nominees



Diana Greenfield
Consultant Nurse

Sheffield Teaching Hospitals
NHS Foundation Trust
Yorkshire and Humberside



Bob Klaber
London School of Paediatrics
Sector Chair, Consultant
Paediatrician

St Mary's Hospital, London
School of Paediatrics and
Imperial Healthcare NHS Trust
London



Fiona Clark
Chief Officer

NHS South Sefton Clinical
Commissioning Group and NHS
Southport and Formby Clinical
Commissioning Group
North West



Maggie Ward
Operations Manager for
Theatres

Cambridge University
Hospitals NHS Trust
East of England



Angela Upton
Dementia Services Manager

South Staffordshire and
Shropshire Healthcare NHS
Foundation Trust
West Midlands



Lindsay Garcia
Nurse Consultant Critical
Care

South Tees Hospitals NHS
Foundation Trust
North East



NHS Inspirational Leader of the Year

The Nominees



Jerry Clough
**Chief Operating Officer
and Managing Director of
Western Locality**

Northern, Eastern and
Western Devon Clinical
Commissioning Group
South West



Anne-Maria Olphert
**Chief Nurse, Quality Officer
and Director of Nursing**

NHS Erewash Clinical
Commissioning Group
East Midlands



Amanda Barnes
**Divisional Head of Nursing
and Allied Health Professions**

University Hospital Southampton
NHS Foundation Trust
Thames Valley and Wessex



Paul Sadler
Director of Education

Portsmouth Hospitals
NHS Trust
Thames Valley and Wessex



Michael Wilson
Chief Executive Officer

Surrey and Sussex NHS Trust
Kent, Surrey and Sussex

***“People who have
inspired people,
services and
patients in every
corner of the
the NHS”
Simon Bird,
Hay Group***



NHS Inspirational Leader of the Year

And the winner is...

From left: Paul Sadler, Ade Adepitan MBE, host, Simon Bird, Hay Group, and Karen Fidgett, representing Angela Upton



Paul Sadler

Director of Education, Portsmouth Hospitals NHS Trust

Angela Upton

Dementia Services Manager, South Staffordshire and Shropshire



National NHS Leadership Recognition Awards 2015

NHS Inspirational Leader of the Year

NHS
Leadership Academy

Diana Greenfield

Consultant Nurse
Sheffield Teaching Hospitals NHS Foundation Trust

Bob Klaber

London School of Paediatrics Sector Chair, Consultant Paediatrician
St Mary's Hospital, London School of Paediatrics and Imperial
Healthcare NHS Trust

Fiona Clark

Chief Officer
NHS South Sefton Clinical Commissioning Group/NHS Southport
and Formby Clinical Commissioning Group

Maggie Ward

Operations Manager for Theatres
Cambridge University Hospitals NHS Trust

Angela Upton

Dementia Services Manager
South Staffordshire and Shropshire Healthcare NHS Foundation
Trust

Lindsay Garcia

Nurse Consultant Critical Care
South Tees Hospitals NHS Foundation Trust

Jerry Clough

Chief Operating Officer and Managing Director of Western Locality
Northern, Eastern and Western Devon Clinical Commissioning Group

Anne-Maria Olphert

Chief Nurse Quality Officer and Director of Nursing
NHS Erewash Clinical Commissioning Group

Amanda Barnes

Divisional Head of Nursing and Allied Health Professions
University Hospital Southampton NHS Foundation Trust

Paul Sadler

Director of Education
Portsmouth Hospitals NHS Trust

Michael Wilson

Chief Executive Officer
Surrey and Sussex NHS Trust

Delivered in
partnership with
Hay Group





NHS Leader of Inclusivity of the Year



NHS Leader of Inclusivity of the Year

The Nominees



Vijay Kumar
**Clinical Director,
General Practitioner and
Community Surgeon**
Askern Group Medical
Practices
Yorkshire and Humberside



Nicola Pullman
**Service Lead, Carers and
Communities**
North East Lincolnshire Clinical
Commissioning Group
Yorkshire and Humberside



Teresa Manders
Director of Midwifery
St George's Healthcare
London



Joe O'Grady
**Equality and Diversity
Manager**
Countess of Chester NHS
Foundation Trust
North West



James Holland
**Customer Inclusion and
Engagement Team Manager**
Hertfordshire Partnership
University NHS Foundation Trust
East of England



Paul Singh
Equality and Diversity Lead
Dudley and Walsall Mental
Health Partnership NHS Trust
West Midlands



NHS Leader of Inclusivity of the Year

The Nominees



Patrick Price
**General Manager and
Equality and Diversity
Lead**

Northumbria Healthcare
NHS Foundation Trust
North East



Project SEARCH Team
**Partnership between
Plymouth Hospitals, Plus,
City College Plymouth,
SERCO**

North East



Sophie Ford
Lead for Equality and Diversity

Lincolnshire Partnership NHS
Foundation Trust
East Midlands



Pamela Campbell
**Nurse Consultant –
Homelessness and Health
Inequalities**

Solent NHS Trust
Thames Valley and Wessex



Angela Rayner
Inclusion Manager
**South East Coast Ambulance
Service NHS Foundation Trust**

Kent, Surrey and Sussex

***“Inclusion is
about making
difference
work”***

**Habib Naqvi,
NHS England**



NHS Leader of Inclusivity of the Year

And the winner is...

From left: Joe O'Grady, Ade Adepitan MBE, host, and Habib Naqvi, NHS England



Joe O'Grady

Equality and Diversity Manager, Countess of Chester NHS Foundation Trust



National NHS Leadership Recognition Awards 2015

NHS Leader of Inclusivity of the Year



Vijay Kumar

Clinical Director, General Practitioner and Community Surgeon
Askern Group Medical Practices

Nicola Pullman

Service Lead, Carers and Communities
North East Lincolnshire Clinical Commissioning Group

Teresa Manders

Director of Midwifery
St George's Healthcare

Joe O'Grady

Equality and Diversity Manager
Countess of Chester NHS Foundation Trust

James Holland

Customer Inclusion and Engagement Team Manager
Hertfordshire Partnership University NHS Foundation Trust

Paul Singh

Equality and Diversity Lead
Dudley and Walsall Mental Health Partnership NHS Trust

Patrick Price

General Manager and Equality and Diversity Lead
Northumbria Healthcare NHS Foundation Trust

Project SEARCH Team

Partnership between Plymouth Hospitals, Pluss, City College
Plymouth, SERCO

Sophie Ford

Lead for Equality and Diversity
Lincolnshire Partnership NHS Foundation Trust

Pamela Campbell

Nurse Consultant - Homelessness and Health Inequalities
Solent NHS Trust

Angela Rayner

Inclusion Manager
South East Coast Ambulance Service NHS Foundation Trust

Delivered in partnership with:



The background of the slide features a dark blue gradient with a pattern of light blue, five-pointed stars. Each star is positioned at the end of a thick, light blue, three-dimensional-looking bar that radiates outwards from the center, creating a fan-like effect. The text 'NHS Innovator of the Year' is centered in white, bold font.

NHS Innovator of the Year



NHS Innovator of the Year

The Nominees



Nicola Pullman
**Service Lead, Carers
and Communities**

North East Lincolnshire Clinical
Commissioning Group
Yorkshire and Humberside



Gillian Halley
**Director of Hospital to
Home Service**

The Royal Brompton and
Harefield NHS Foundation Trust
London



Jackie Bird
**Executive Director of Nursing
and Quality**

The Christie NHS
Foundation Trust
North West



New Beginnings
**West Cheshire Clinical
Commissioning Group Led
Maternity Network**
North West



Tim Burton
**Clinical Director –
Acute Medicine**

Cambridge University Hospitals
NHS Trust
East of England



Clare Nash
Programme Manager

Royal Wolverhampton
NHS Trust
West Midlands



NHS Innovator of the Year

The Nominees



Debi McKeown
**Nursing Sister in
Therapeutic Care**
South Tees Hospitals NHS
Foundation Trust
North East



**Bill Bruce-Jones and
Anthony Harrison**
**Consultant Liaison
Psychiatrist & Clinical Director
BANES**
**Consultant Nurse in Liaison
Psychiatry**
Avon and Wiltshire Mental
Health Partnership NHS Trust
South West



Rakesh Patel
**NIHR Academic Clinical
Lecturer in Nephrology Medical
Education and Honorary
Specialist Registrar**
University Hospitals of Leicester
and University of Leicester
East Midlands



Richard Croft
**GP and Clinical Lead
for Diabetes**
Tilehurst Surgery
Thames Valley and Wessex



Anjie Roots
Health Visitor
Medway Community Healthcare
Kent, Surrey and Sussex

***“Innovation has
been a hallmark
of the NHS”***
Simon Fairman,
NHS Improving Quality



NHS Innovator of the Year

And the winner is...



From left:
Gillian Halley,
Ade Adepitan
MBE, host, and
Steve Fairman,
NHS Improving
Quality

Gillian Halley

Director of Hospital to Home Service, The Royal Brompton
and Harefield NHS Foundation Trust



National NHS Leadership Recognition Awards 2015

NHS Innovator of the Year

NHS
Leadership Academy

Nicola Pullman

Service Lead, Carers and Communities
North East Lincolnshire Clinical Commissioning Group

Gillian Halley

Director of Hospital to Home Service
The Royal Brompton and Harefield NHS Foundation Trust

Jackie Bird

Executive Director of Nursing and Quality
The Christie NHS Foundation Trust

New Beginnings

West Cheshire Clinical Commissioning Group Led Maternity Network

Tim Burton

Clinical Director – Acute Medicine
Cambridge University Hospitals NHS Trust

Clare Nash

Programme Manager
Royal Wolverhampton NHS Trust

Debi McKeown

Nursing Sister in Therapeutic Care
South Tees Hospitals NHS Foundation Trust

Bill Bruce-Jones and Anthony Harrison

Consultant Liaison Psychiatrist and Clinical Director BANES/
Consultant Nurse in Liaison Psychiatry
Avon and Wiltshire Mental Health Partnership NHS Trust

Rakesh Patel

NIHR Academic Clinical Lecturer in Nephrology Medical Education
and Honorary Specialist Registrar
University Hospitals of Leicester and University of Leicester

Richard Croft

GP and Clinical Lead for Diabetes
Tilehurst Surgery

Anjie Roots

Health Visitor
Medway Community Healthcare

Delivered in
partnership with
Hay Group





Outstanding Collaborative Leadership



Outstanding Collaborative Leadership

The Nominees

**Joint Management
Integrated Care Team
Doncaster at Doncaster and
Bassetlaw Hospitals NHS
Foundation Trust,
Doncaster Council,
Rotherham, Doncaster
and South Humber NHS
Foundation Trust**
Yorkshire and Humberside



**Franz Brunnhuber
Consultant Clinical
Neurophysiologist**
King's College Hospital
NHS Foundation Trust
London



**Janet Ratcliffe
Associate Director for the
Strategic Clinical Network**
Greater Manchester, Lancashire
and South Cumbria SCN and
Senate
North West



**Liz Webb
Head of Palliative
Care Services**
Cambridge Community
Services
East of England



**Lynda Scott and
Stephanie Belgeonne
Senior Partner and Director**
Midlands and Lancashire
Commissioning Support Unit
West Midlands



**FRESH
Collaborative Tobacco
Control Programme County**
Durham and Darlington
NHS Foundation Trust
South West



Outstanding Collaborative Leadership

The Nominees



Matthew Boulter
GP/Practice Partner, Clinical Lead and Chair of Penwith Programme

The Alverton Practice,
NHS Kernow
South West



John Pattison
Veterans Service Development Lead

Devon Partnership NHS Trust
South West



Rachel Munton
Managing Director

East Midlands Academic Health Science Network
East Midlands



Armed Forces Co-Responders Unit
Royal Air Force and South Central Ambulance Service

Thames Valley and Wessex



One Call One Team Urgent Care Service

Western Sussex Hospitals
NHS Foundation Trust
Kent, Surrey and Sussex

“We have to work together to do it... collaboration not just within the NHS but beyond”

Joe Simpson,
Leadership Centre



Outstanding Collaborative Leadership

And the winner is...

From left:
Joe Simpson,
Leadership
Centre, Ade
Adepitan
MBE, host,
and the Joint
Management
Integrated
Care team



Joint Management Integrated Care Team

Doncaster at Doncaster and Bassetlaw Hospitals NHS Foundation Trust, Doncaster Council,
Rotherham, Doncaster and South Humber NHS Foundation Trust



National NHS Leadership Recognition Awards 2015



Closing remarks

Jan Sobieraj, Managing Director, NHS Leadership Academy



Jan Sobieraj, Managing Director, NHS Leadership Academy would like to thank:

Ade Adepitan MBE for a great job hosting and sharing his experience of the NHS

Simon Stevens for being an inspirational speaker

Our ten **Local Delivery Partners** and **nominators** for helping to highlight some fantastic people

Hay Group for sponsoring the National NHS Leadership Recognition awards

Public Health England, Leadership Centre and Management in Partnership for sponsoring the Regional NHS Leadership Recognition awards

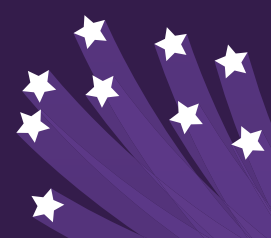
The team, especially **Ramima Khanam** for pulling the event together



Ordering pictures



Why these awards matter



Ade Adepitan @AdeAdcpitan
Massive thanks @Hay_Group_UK @NHSLeadership for a fantastic night. I had great time hosting. You're all superheroes! #NHS Awards
6:40 PM - 1 Apr 2015

Jon Restell @Jon_Restell
Simon Stevens: tonight is the occasion for the country to thank the NHS for what it achieves #NHS Awards
7:25 PM - 31 Mar 2015

Jon Restell @Jon_Restell
Public satisfaction with the NHS is the second highest it's ever been, Simon Stevens reminds us #NHS Awards
7:26 PM - 31 Mar 2015

Phil Kenmore @philkenmore
Amazing evening at the #NHS Awards such great people, proud @Hay_Group_UK are sponsors
9:22 PM - 31 Mar 2015

FRESH Smoke Free NE @FreshSmokeFree
Well done to all winners of the #NHS Awards - great to have been nominated!
8:10 AM - 1 Apr 2015

Dean @DLsmallplant
@StGeorgesTrust Thank you for the first most fantastic experience well looked after by everyone, so professional & caring #NHS Awards
7:48 PM - 1 Apr 2015

jacky groves @GrovesJacky
@GrovesJacky 3 health visitors in the finals #NHS Awards amazing evening well done to all of us
7:38 PM - 1 Apr 2015

NHS AQUA @AQUA_Inform
Congratulations to our members @Oldhamccg on being awarded governing body of the year at the #NHS Awards
9:15 AM - 1 Apr 2015

Portsmouth ICU @icu_portsmouth
National NHS Leadership Recognition Award Winner @PaulSadler76. Fantastic news. Congratulations! @QAHospitalNews #NHS Awards
8:05 AM - 1 Apr 2015

R Brompton Harefield @RBandH
Congratulations to @RBandH consultant Dr Gillian Halley who was last night named NHS Innovator of the Year #NHS Awards
9:50 AM - 1 Apr 2015

Paul Hardy @paul_hardy5
Glad that @JoeTeape took national development lead #NHS Awards. Goes to show strength of leadership @PHNT_NHS. Congrats from @NEWDevonCCG
4:22 PM - 1 Apr 2015

National NHS Leadership Recognition Awards 2015

Thank you

Delivered in
partnership with:

HayGroup®