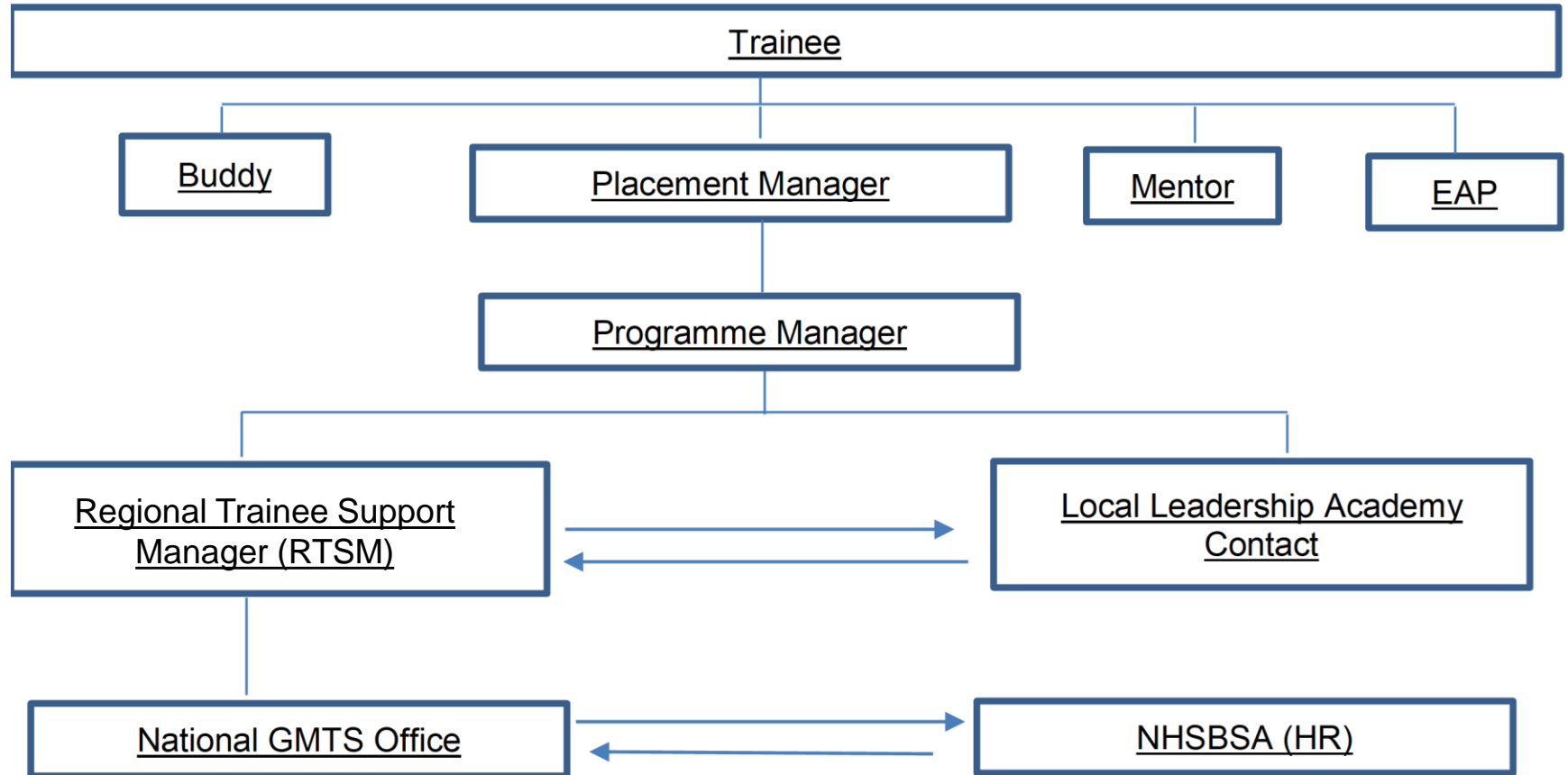


GMTS Support Infrastructure for Trainees



EAP – Employee Assistance Programme

Local Leadership Academy also referred to as LLA

National GMTS Office can be contacted via Graduate

Enquiries email inbox

NHSBSA – NHS Business Services Authority

Roles in GMTS

PEOPLE	ROLES
GMTS Trainee	Actively participate in their development
Host organisations	Facilitate and support development of future leaders
LLAs	Identify/assure placements and support managers
Programme Managers	Overarching support and facilitation of experience for trainees
Placement Managers	Day-2-Day management/support for trainees in their placements
Regional Trainee Support Manager	First point of contact for trainees for Scheme related queries
Mentor	Support career and personal development
Buddy	Answers Trainee questions
Higher Education Institute	Provide academic education and training

Regional Trainee Support Managers

- New RTSM roles introduced in 2018
- 7 RTSMs covering 7 regions and supporting 10 Local Leadership Academies
- Supports Trainees locally as part of GMTS delivery across a regional health economy
- Main point of contact after Placement and Programme Managers for GMTS Trainees in a region working with Programme, Placement Managers and local academies to ensure highest quality experience to support the development and growth of future NHS leaders.

NAME	REGION
TBC	North West
Kelly Woods	Yorkshire and the Humber and North East
Breda Watson	East of England
Bobbie Petford	East and West Midlands
Eleanor Wallace	South West
Alastair Boothroyd	South East (KSS and TVW)
Aaliya Alibhai	London

Local Leadership Academies

- Local Leadership Academies (LLAs) are regional partners of the Academy. The LLAs look after trainees' local induction and coordinate placements. The core aspects of the scheme are the same across the country (education, Experiential Learning and ALS) whilst aspects such as placement provision, access to local training opportunities and networks may vary.
- LLAs work with NHS organisations to obtain and quality assure placement opportunities for trainees on GMTS incorporating trainee feedback at all opportunities to develop and refine placement offers